



**BUDOSPRZET**<sup>®</sup>  
[www.budosprzet.pl](http://www.budosprzet.pl)



## CONTENTS

### About the company

Scope of activity .....	5
-------------------------	---

### Formwork systems

MidiFORM .....	11
----------------	----

BudoUNI .....	15
---------------	----

Concealed elements and accessories .....	19
--	----

BudoSTROP and heavy duty tower .....	21
--------------------------------------	----

BudoSŁUP .....	25
----------------	----

BudoEKO .....	27
---------------	----

### Scaffoldings

BudoRUSZT .....	33
-----------------	----

### Masonry repair systems

HELIFIX .....	37
---------------	----



## Zakres działalności

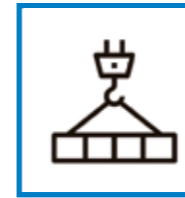
BUDOSPRZĘT Sp. z o.o.  
operates on the construction  
equipment market since 1992.

We specialize in renting,  
selling and manufacturing  
construction equipment,  
mainly for concrete work.

## ABOUT THE COMPANY







Budosprzet Sp. z o.o. is also a manufacturer of containers. We offer standard office and social containers and container sets tailored to the needs of our clients. Standard containers are also available for rent.



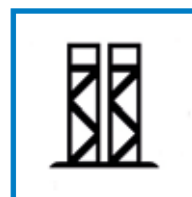
To meet the expectations of our customers, Budosprzet Sp. z o.o. has launched an online store [www.budomarket.net](http://www.budomarket.net). The available assortment is constantly expanded and there are a lot of promotions of goods at very favorable prices.

We provide our customers with:

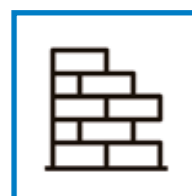
- » quick delivery;
- » high technical level of all products;
- » professional service by trained staff;
- » customer support by our technical advisors.



We have several our formwork systems, which we successfully offer on the Polish and European markets. These products are durable, easy to use and proven on a lots of construction sites. Where the requirements for the shape of the concrete are greater, we offer specialized formwork made for a specific project.



We have several types of heavy duty towers, so we can also work with customers performing high ceilings, walkways, bridges and similar structures. The offer is complemented by all accessories needed for work with concrete, including high quality tie rods, nuts, washers for reinforcement and construction security elements, such as temporary fences.



We are an authorized partner of HELIFIX company and thus a supplier of innovative repair and reinforcement systems for various types of masonry structures, as well as a number of solutions useful in the construction of new wooden and masonry structures. The company also provides specialized services related to the supply and installation of expansion joints.





RENTAL  
SALES  
PRODUCTION

The high quality of our products, which meet safety requirements, is evidenced by the following certificates: TÜV SÜD Polska, CIRF EFPF, Firma Godna Zaufania, Śląska Izba Budownictwa, Certyfikat Rzetelności and others.



## **BUDOSPRZET**<sup>®</sup> zapewnia:



Expert technical advice

Technical service

Online sales on the Polish and European market

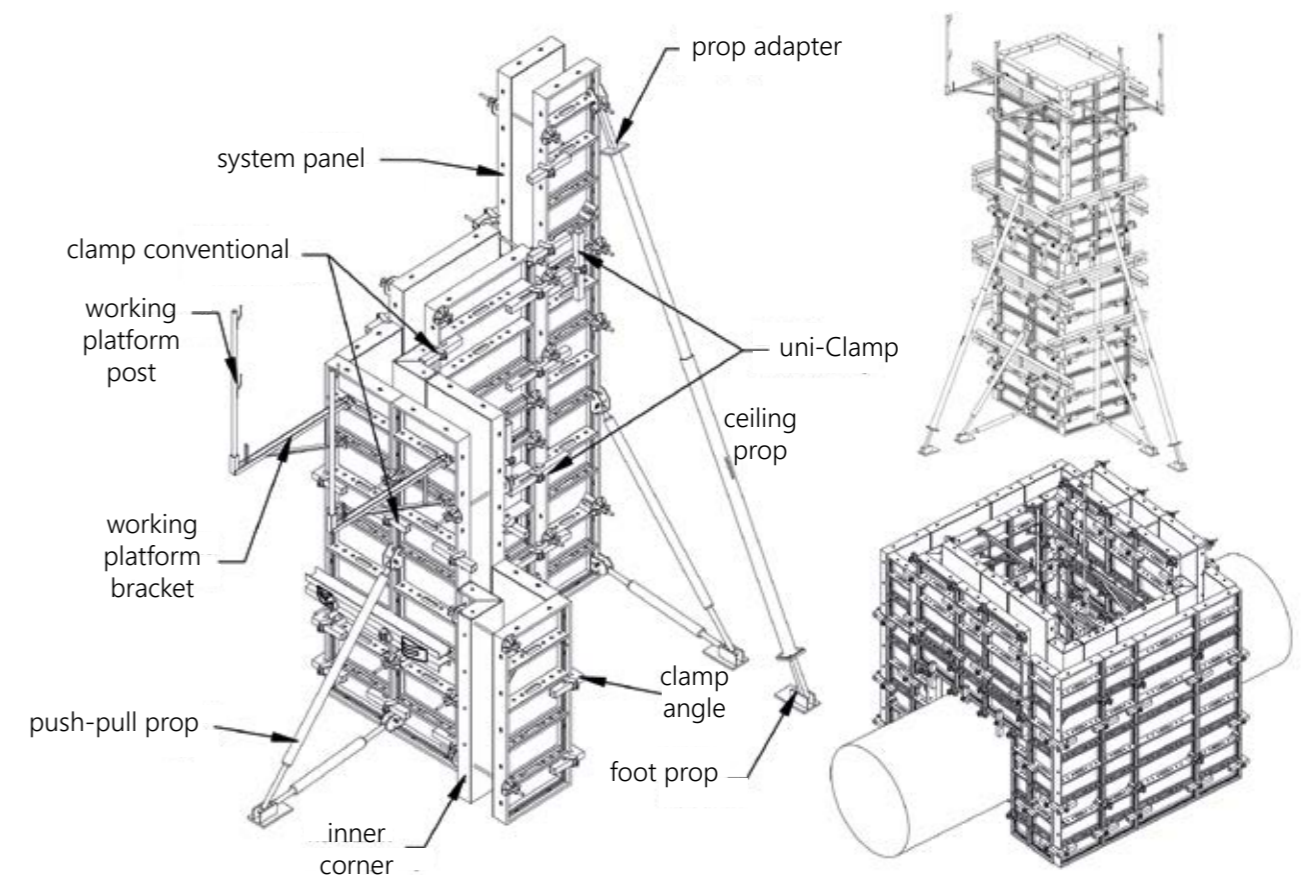
Partnership



## MidiFORM

Universal medium-sized formwork – lightweight yet strong and stable. Installation does not require a crane, and the panels can be carried by two people. It is ideal for forming concrete on all structures. The frames consist of a hot-dip galvanized steel frame and a sheathing made of 15 mm plywood. Elements of the system are very robust and durable. Availability of many sizes of frames allows for good matching of the formwork to the object being formed.

The steel frames have enlarged tie rod pockets with conically shaped holes to facilitate tie rod installation and removal while protecting the plywood from premature failure. The reinforced construction means less formwork deformation under heavy loads and less equipment required, resulting in faster work.



## FORMWORK SYSTEMS





## SYSTEM PARAMETERS

Maximum concreting height: **6 m**

Permissible concrete pressure: **up to 60 kN/m<sup>2</sup>**

Weight per m<sup>2</sup> of formwork: **approximately 55 kg**

Dimensions:

Height: **90, 150, 270, 300 cm**

Width: **25, 30, 40, 45, 50, 55, 60, 65, 70UN, 75, 80, 85, 90 cm**

Large XXL/Mammoths:

Height: **270, 300 cm**

Width: **120, 180, 240 cm**

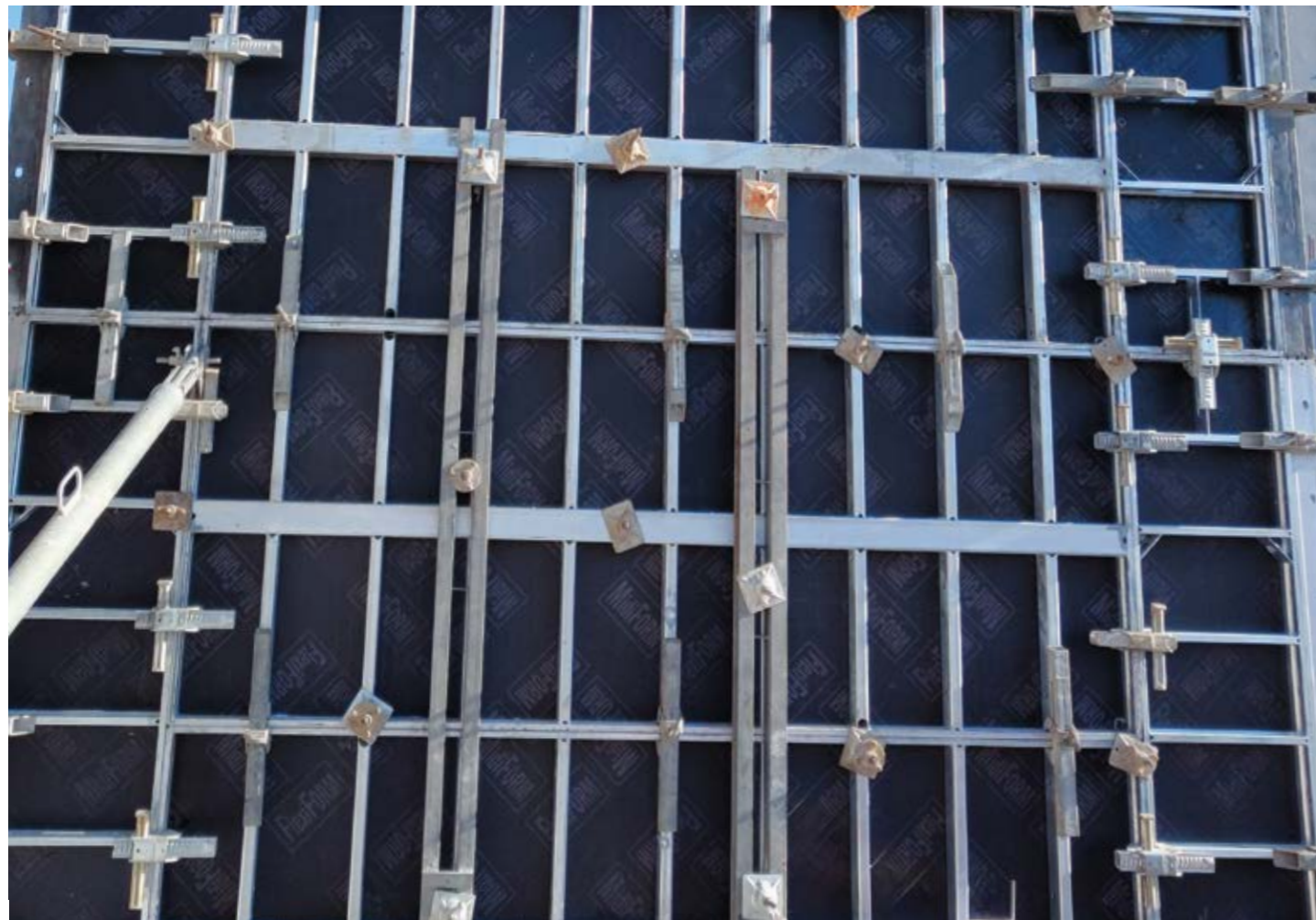


## SYSTEM ADVANTAGES

- » European manufacturers: high quality and durable components;
- » Easy to adapt to the project: large number of system components;
- » Relatively light: can be set up manually or mechanically with a crane.







## FlexiFORM

Small-size formwork FlexiFORM is one of the lightest available on the market, the heaviest board (90 x 150UN) weighs about 45 kg, which allows setting up the complete formwork without using a crane. The lightness and versatility of the panels allow for the formation of concrete from the smallest objects to complex forms on large construction sites. The improvements made are far superior in functionality to other lightweight formwork systems.

Steel frame made of perforated flat bar, 8 cm wide and 5 mm thick, is hot-dip galvanized and filled with 12 mm thick plywood that meets the standard DIN 68705-3: 1981-12. The inner flat bars are connected to a jam, which strengthens the construction of the board and protects it from cracking.

### SYSTEM ELEMENTS

#### Formwork frames and corners:

- » Standard/universal formwork frame
- » Inner corner
- » Outer corner
- » Hinged corner

#### Additional elements:

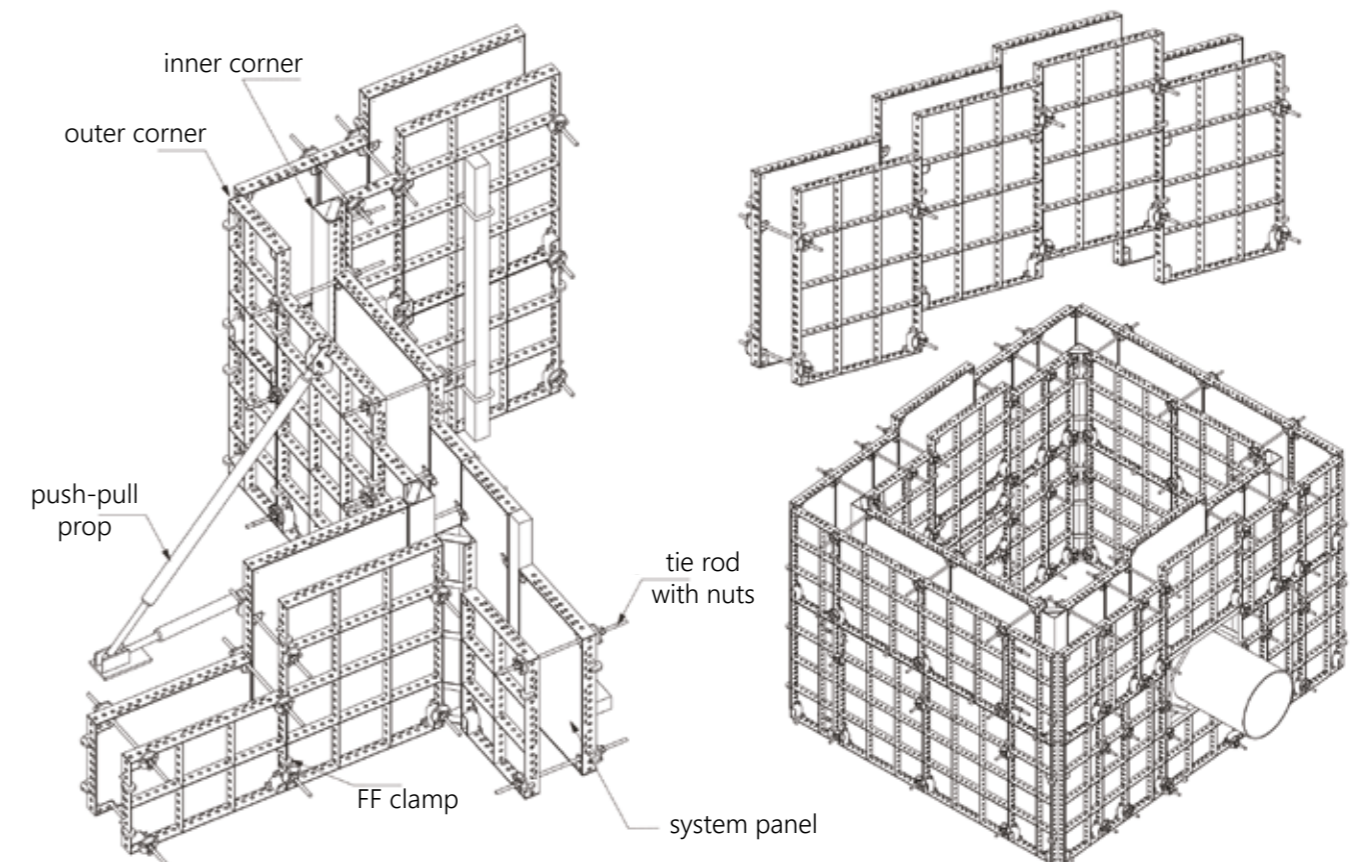
- » Bolt tensioner
- » Stiffening beam
- » Edge wedge
- » Push poll props
- » High prop
- » U head
- » Prop foot
- » Transport sling
- » Compensating insert

#### Formwork connecting elements:

- » Standard clamp
- » Universal clamp
- » Corner clamp
- » Wedge lock
- » DW15 tie rod
- » Centering anchor nut
- » Adjustable nut
- » Hexagonal nut
- » Centering tie rod
- » UN nut
- » UN pin

#### Protective elements:

- » Working platform support
- » Working platform post





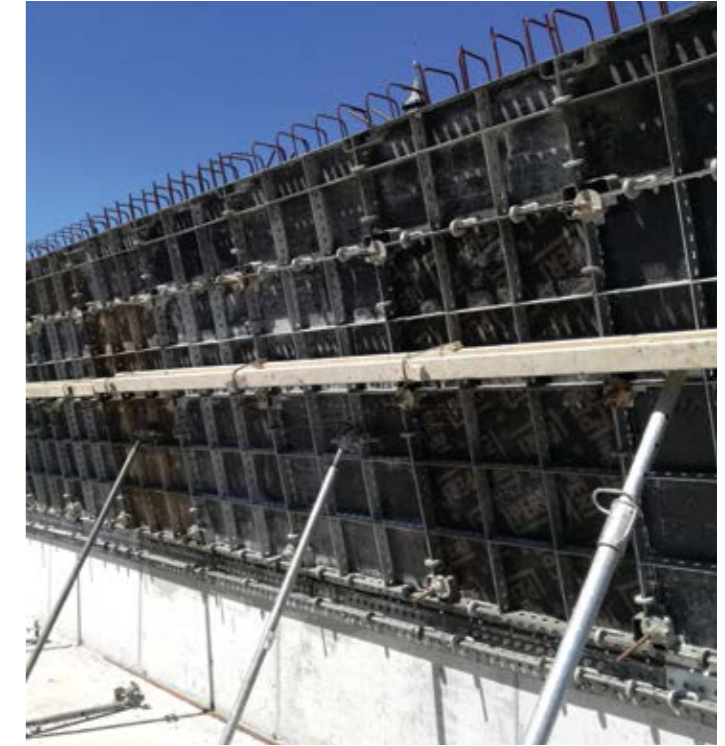


## SYSTEM PARAMETERS

Maximum concreting height: **3 m**  
Permissible concrete pressure: **up to 40 kN/m<sup>2</sup>**  
Weight per m<sup>2</sup> of formwork: **approximately 35 kg**

### Dimensions:

Height: **90, 120, 150 cm**  
Width: **10, 20, 25, 30, 40, 45, 50, 60, 60UN, 75, 90, 90UN cm**







## SYSTEM ADVANTAGES

- » Suitable for installation by hand or by crane;
- » System versatility (dimensional increments of 5 cm);
- » Possibility of obtaining a smooth concrete surface;
- » Vertical and horizontal panel arrangement.

## SYSTEM ELEMENTS

### Formwork panels and corners:

- » Standard/universal formwork frame
- » Inner corner
- » Outer corner
- » Adjustable corner
- » Matching corner

### Additional elements:

- » H-20 beam clamp
- » Squared timber clamp
- » Edge wedge
- » Prop
- » Push pull prop
- » U-head
- » Prop foot
- » Transport sling

### Elementy łączące deskowanie:

- » Tekko clip
- » Tensioning bolt
- » Single pin
- » Double pin
- » Pin wedge
- » DW15 tie rod
- » Centering nut
- » Adjustable nut
- » Hexagonal nut
- » Steel Plate

### Protective elements:

- » Working platform support
- » Working platform post

## Concealed elements and accessories

Budosprzet offers a wide range of concealed elements and formwork accessories necessary for any construction site and compatible with most of the available systems. Durable and reliable ties are available in any length - according to customer requirements. We also offer high quality anti-adhesion agents to protect formwork from permanent concrete bonding, while ensuring smooth concrete surfaces without stains or damage.



- » Anti-adhesion fluid
- » Adhesives for concrete plugs
- » Cover tubes for tie rods
- » PVC reinforcement spacers
- » Concrete pads for reinforcement
- » DW15 tie rods
- » Anchor and adjustable nuts

- » PVC and wooden triangular slats
- » Bentonite strips
- » Expansion joint meshes
- » Tie wires
- » Plastic formwork plug
- » Cover tube plugs
- » Safety railing posts

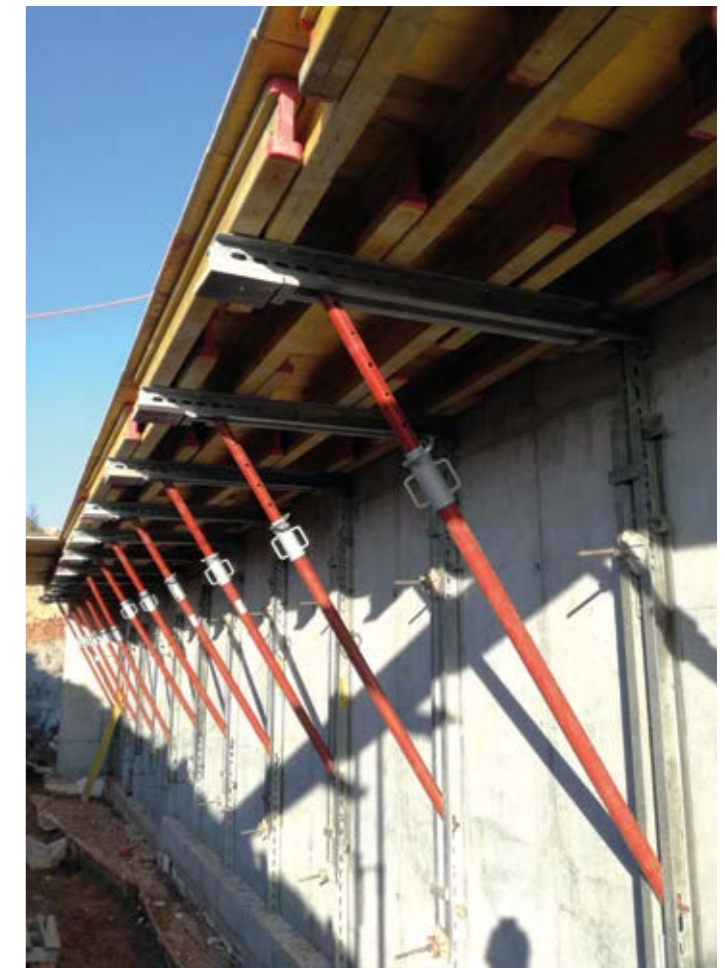


## BudoSTROP and heavy duty towers

The universal system of traditional support allows for good adjustment of the formwork to the object being formed. The system also allows for the support of joists and is compatible with SMP8 and Roro L tower support systems. Thanks to the small number of components included in the system, assembly and disassembly is quick and easy.

Beam formwork consists of basic structural elements:

- » Ceiling props with a load capacity of 20 kN;
- » Timber beam H-20;
- » Sheathing with plywood or three-layer board;
- » Prop U-head;
- » Intermediate prop head;
- » Tripod.





## SYSTEM PARAMETERS

Weight per m<sup>2</sup> of formwork: **approximately 38 kg**

H-20 beam length sizes:

110, 130, 150, 180, 210, 245, 265, 290, 330, 360, 390, 420, 450, 490, 590 cm

20 kN props length sizes:

DB80 (50-80 cm), DB130 (80-130 cm), DB180 (110-180 cm)

DB260 (150-260 cm), DB300 (170-300 cm), DB350 (190-350 cm)

DB410 (230-410 cm), DB500 (280-500 cm), DB550 (300-550 cm)







## BudoSŁUP

Formwork system designed to form columns of square and rectangular cross-section.

### SYSTEM PARAMETERS

Maximum concrete pressure: **40 kN/m<sup>2</sup>**  
 Dimensions: **from 15 to 45 cm**  
 Height: **3 m**  
 Cross-section: **rectangle, square**

### SYSTEM ADVANTAGES

- » High load capacity;
- » Accuracy and ease of execution for complex object plan;
- » Components made of high quality materials;
- » Relatively simple system assembly and disassembly.

### SYSTEM ELEMENTS

#### Formwork connecting elements:

- » DB ceiling prop with minimum capacity of 20 kN
- » Timber beam H-20
- » Prop head
- » Intermediate prop head
- » Three-layer plywood with 21 mm
- » Three-layer panel 21 mm with or without edge protection
- » Tripod stand for prop
- » Girder lock





## SYSTEM ADVANTAGES

- » The cheapest system on the market;
- » Simple and quick to assembly;
- » Little space needed for transport and storage;
- » Manual assembly.



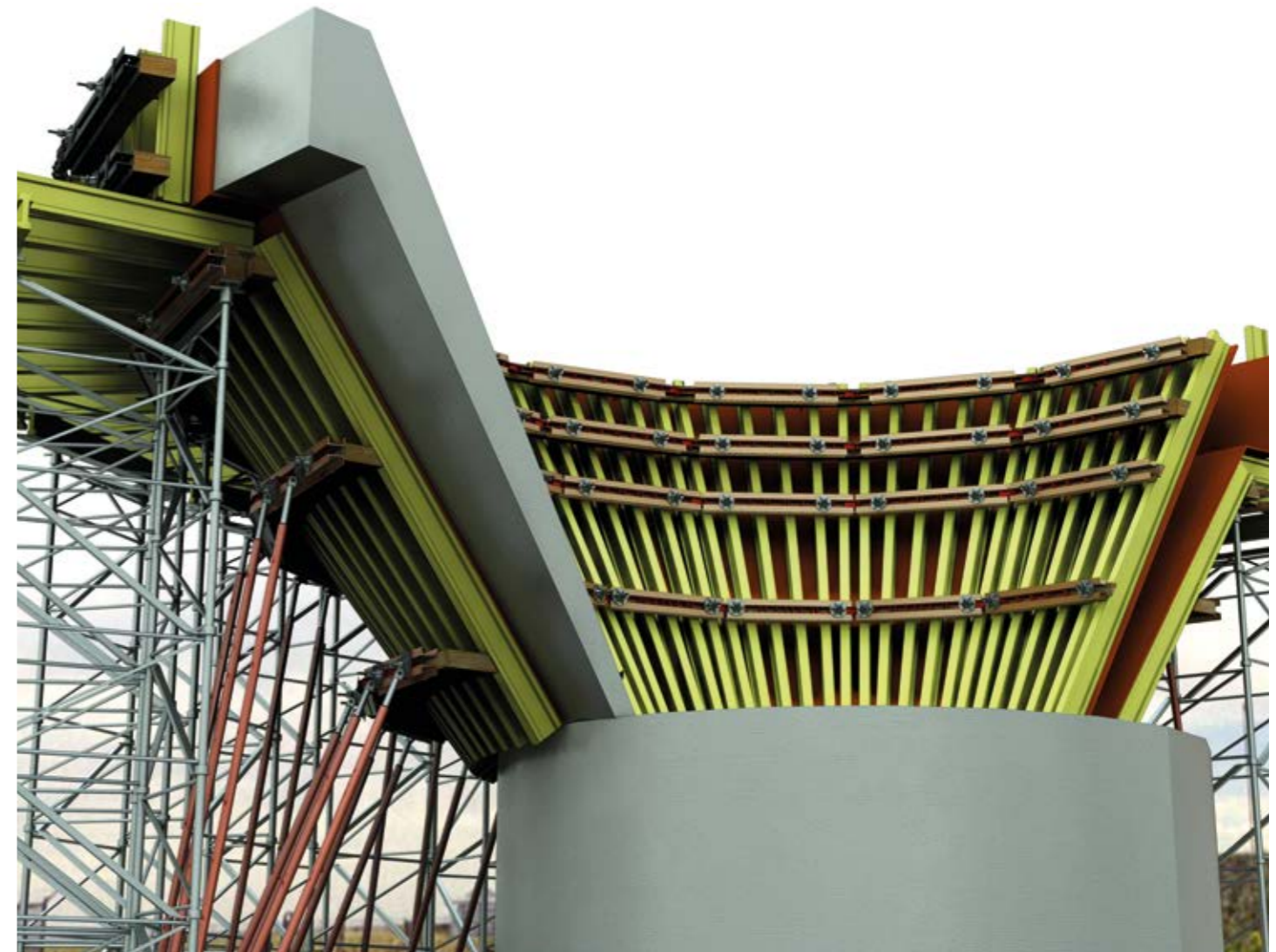
## ELEMENTY SYSTEMU

- » Narożnik do formowania BudoSŁUP
- » Klin do narożnika BudoSŁUP
- » Uchwyt podpory słupa BudoSŁUP
- » Łącznik do podpory BudoSŁUP
- » Nakrętka centrująca 70
- » Sklejka 27 mm 50 x 300 BudoSŁUP

## BudoEKO

### WALLS AND TANKS

Formwork system based on H20 timber beams, plywood and system prop with accessories. The system is designed for all elements of construction and building, where traditional modular formwork does not work.



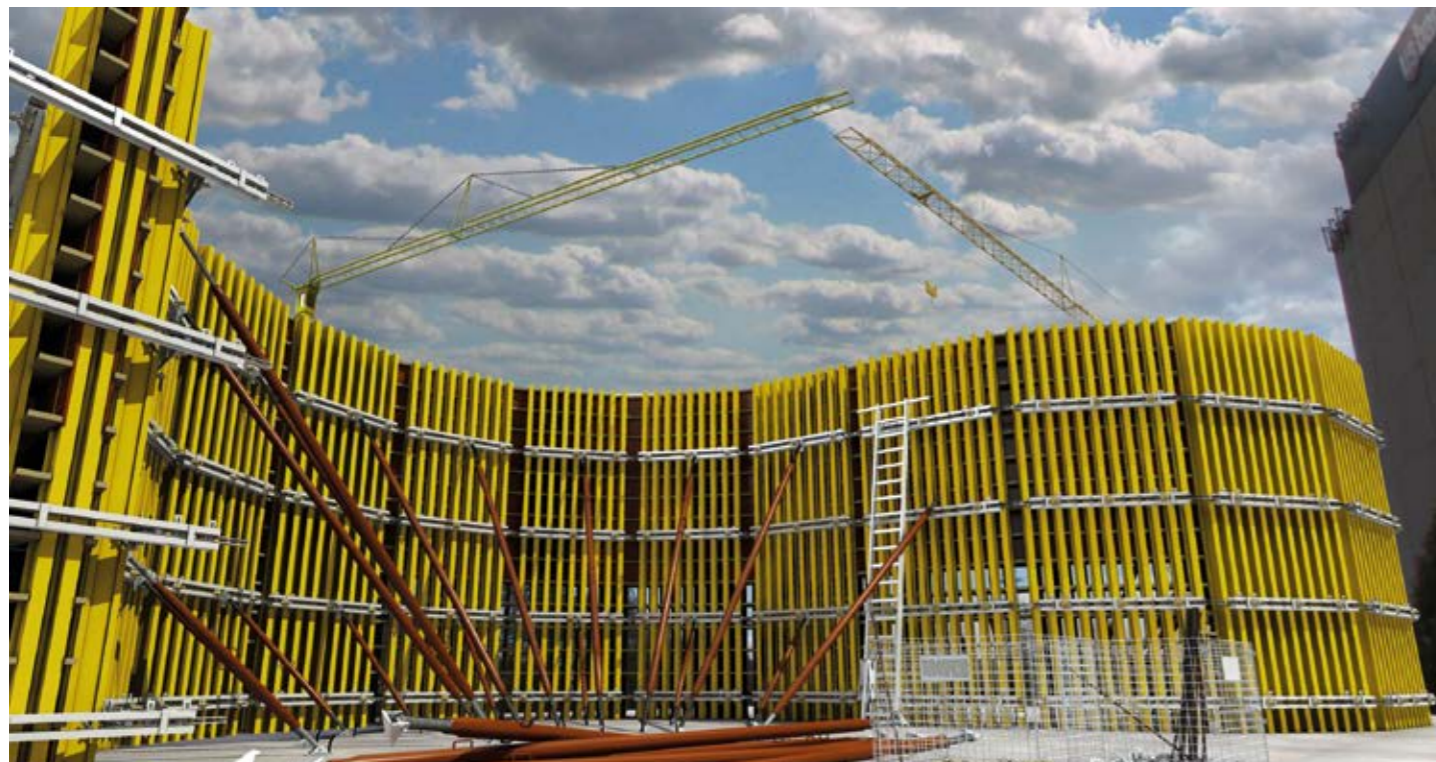
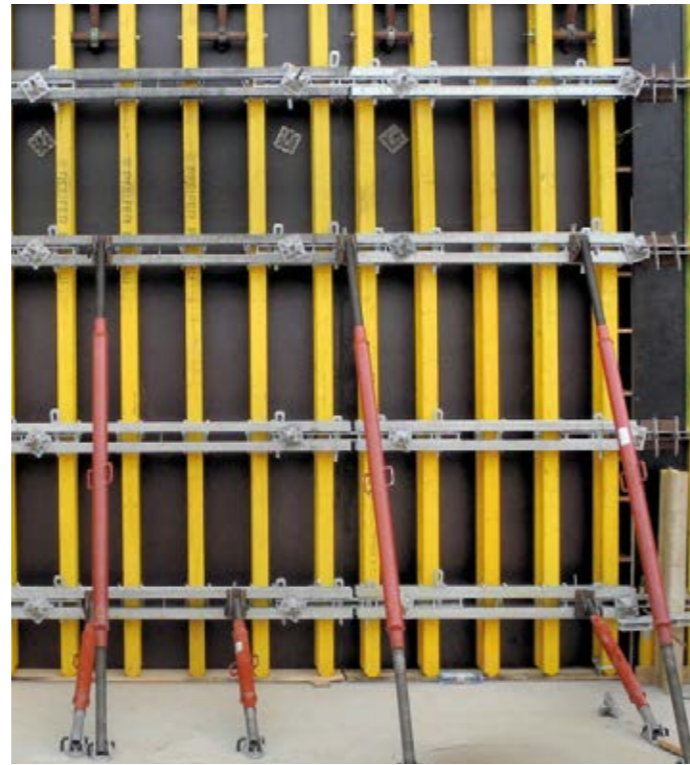
### SYSTEM PARAMETERS

Permissible concrete pressure: **to be determined at design stage**  
Maximum height: **even above 10 m**



## SYSTEM ADVANTAGES

- » No system limitations: very high versatility and universality of the solution;
- » Obtaining a very smooth concrete surface;
- » Ability to design the concrete texture;
- » Ability to adapt formwork parameters to specific requirements.



## SYSTEM ELEMENTS

### Basic elements:

- » Dźwigary drewniane H-20
- » Belki stalowe
- » Narożnik zewnętrzny
- » Sklejka
- » Podpory systemowe

### Additional elements:

- » Connecting/stiffening beams
- » Connectors
- » Wedges
- » Centerings

## SYSTEM APPLICATIONS

### WALLS

Formwork for any surface.

### TANKS

Formwork for practically any tank. Formwork selection based on inside radius, wall thickness and tank height.



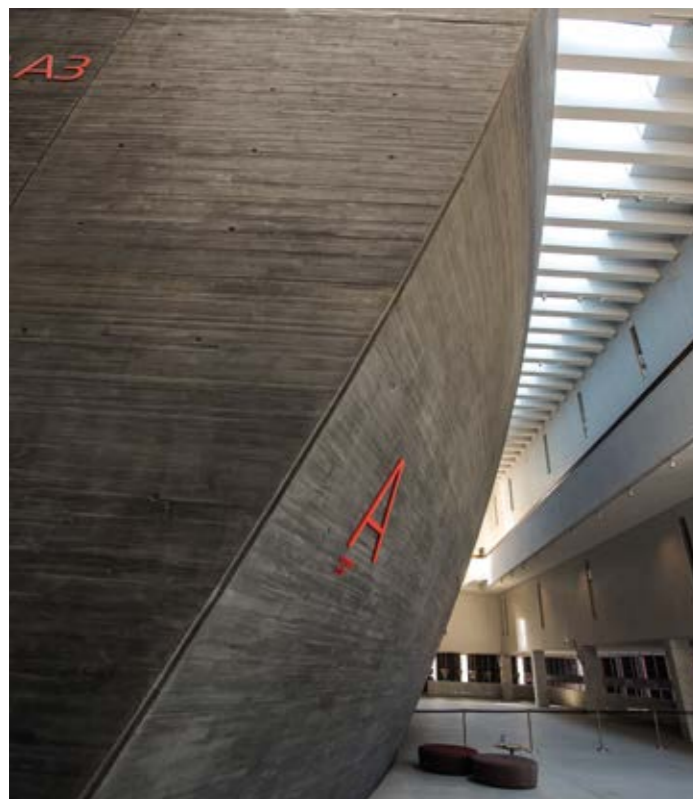
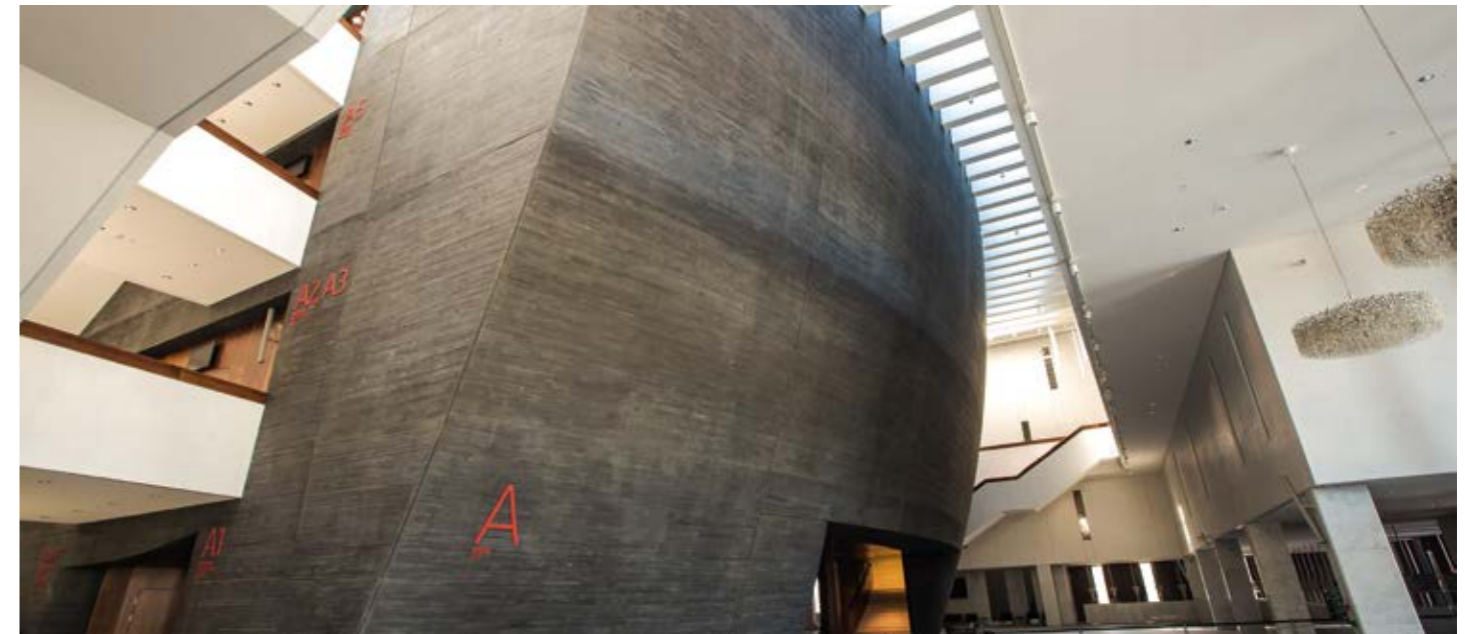
## SPECIALIST FORMWORK

Building interesting architectural forms out of concrete requires specialist formwork. In 2012, as a subcontractor, we performed first assembly of specialist formwork for the construction of the National Polish Radio Symphony Orchestra building in Katowice. Our task was to prepare formwork forms for an unusual wall of the building which is a section of a flattened sphere.

The installation workflow for each formwork element was as follows:

- » Preparation of centerings, i.e. wood processing and cutting of centerings on the plotter-milling machine in CNC;
- » Installation of the steel grate on an assembly table specially prepared by our staff;
- » Assembly of the grate made of wooden beams;
- » Assembly of centerings;
- » Assembly of plywood;
- » Packing in appropriate segments for fast and economical transport.

Budosprzet's fully equipped facilities, i.e. modern carpentry, locksmith and mechanical workshops as well as experienced installation team guarantee the success of each project.





## BudoRUSZT

A multipurpose frame scaffolding consisting of hot-dip galvanized steel vertical frames, wooden, steel and aluminum-plywood platforms.

Construction scaffolding is manufactured in different types. Such a solution allows to provide the most complete adjustment of the scaffolding structure to the specific needs of the user. Scaffolding is used in construction and renovation of buildings (by plasterers, painters, roofers, etc.), but also as a temporary load-bearing structure for various other purposes (e.g. construction of stages and outdoor stages), and, depending on the need, it is built as a free-standing structure or as a wall-mounted scaffolding.



## SCAFFOLDINGS







## SYSTEM PARAMETERS

Maximum height without design: **34 m**  
 Payload: **2kN/m<sup>2</sup>**

### Dimensions:

Width: **0.73, 1.07 m**  
 Platform length: **0.73, 1.07, 1.57, 2.07, 2.57, 3.07 m**



## SYSTEM ADVANTAGES

- » Polish manufacturer - European quality;
- » Ability to pass through and use different field lengths;
- » Quick assembly and disassembly;
- » Universal: Suitable for most scaffolding jobs.

## SYSTEM ELEMENTS

### Basic elements:

- » Hot-dip galvanized steel standard, bypass, transition frame
- » Steel platforms
- » Aluminum-plywood platforms (traffic)
- » Single and double handrails
- » Diagonal brace

### Additional elements:

- » Double coupler
- » Swivel coupler
- » Base jack
- » Anchor connectors
- » Anchor bolts
- » Transverse and longitudinal toe-boards
- » Extension supports
- » Grid beams

### Protective elements:

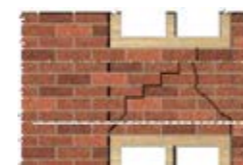
- » Scaffolding mesh
- » Scaffolding tarpaulin



# HELIFIX

Masonry structures deteriorate, crack, and delaminate for many reasons, losing their original strength. These problems can be remedied by using various combinations of universal corrective connectors, anchors and masonry reinforcement products and techniques offered by HELIFIX.

## MASONRY REPAIR STRATEGIES



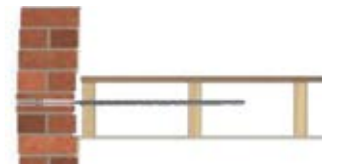
1 Repairing or creating flat arch lintels



2 Repairing brick arch lintels



3 Repairing cracks near corners and openings



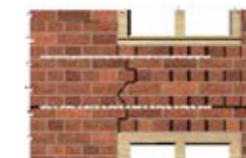
4 Stabilising bowed walls into joist sides



5 Reconnecting internal walls with external walls



6 Replacing cavity wall ties



7 Crack stitching



8 Creating masonry beams



9 Repair of bay windows



## MASONRY REPAIR SYSTEMS



## APPLICATIONS

Helifix remedial products are extremely versatile and adaptable and have wide ranging applications.

Successfully used to overcome most commonly occurring structural faults, they will reliably, economically and sympathetically restore integrity to virtually every type of structure and have proven to be effective in most common construction materials including bricks, blocks, stone, timber, concrete and a variety of regional materials such as cob and Wychert.

### Crack Stitching

A quick, simple, effective and permanent means of stabilising cracked masonry, Helifix crack stitching involves bonding stainless steel HeliBars into appropriate bed joints or cut slots, in bricks, blocks or stonework, with HeliBond cementitious grout.



### Lintel Repair & creation

Where lintels have lost their load-bearing capabilities the traditional solution is to cut out the brickwork, mechanically support the masonry above and install a new lintel, Helifix systems, for lintel repair and creation using the existing masonry, are less disruptive, time consuming and expensive.



### Creating Load Bearing masonry Beams

Where masonry has cracked and failed as a result of ground movement, component failure, weathering or increased loads and stresses, the innovative and versatile Helibeam System ties the masonry together and creates deep masonry beams within the existing masonry.



### Reconnecting Separated Walls

Cracked internal walls which have separated from the main outer walls can be repaired and reconnected both internally and externally.



### Repairing masonry Arches

The versatile Helibeam System can be used to reinstate the structural integrity of all forms of arches, from doorways and lintels to tunnels and bridges.



### Restraining Bowed External Walls

The bowing external walls of a building can be stabilised quickly and simply by securing them to internal floor or roof joists using BowTies or BowTie HDs.



### Stabilising Rubble-Filled Walls

As rubble-filled walls age the fill will often settle and the walls bulge outwards. To stabilise the wall fully grouted cemTies are installed to secure the inner and outer leaves.



### Uzupełnienie i wymiana uszkodzonych kotew w murach szczelinowych

Wall tie failure is a major cause of masonry cracking and, if not addressed, can lead to catastrophic collapse of the outer masonry leaf. Helifix remedial wall ties, with rapid easy installation, provide a secure and reliable connection between the inner and outer leaves.





## REMEDIAL PRODUCTS

Helifix products are made from high tensile Grade 304 (1.4301) or 316 (1.4401) stainless steel to a unique helical design. This creates a slim profile with a large surface area that ensures a secure and lasting connection, with or without grouts or resins, in bricks, blocks, stone, concrete and wood as well as local building materials. It also means all products have great axial strength combined with flexibility which allows natural structural movement and avoids the introduction of any additional stresses. Quick, easy and economical to install, the self-tapping properties of Helifix products provide excellent holding power and avoid splitting timber or masonry. Once installed, all products are fully concealed and leave the building structurally secure but virtually unmarked.



### HeliBar

HeliBar, despite its relatively small cross section, adds substantial tensile properties to the masonry when combined with HeliBond cementitious grout which locks between the fins in a composite action and bonds to the masonry. Consequently, HeliBars have a variety of remedial and new build applications.



### HeliBond

Injectable, cementitious grout.

- Non-shrink thixotropic grout
- Flows easily under pressure to fill voids
- Rapidly develops compressive strength
- Good working time
- Cures to 45n/mm<sup>2</sup> compressive strength after 28 days
- Ready-to-mix components supplied in two-pack sets to reduce waste.



### CemTie

Versatile grouted tie for stabilising all forms of solid masonry.

- Reconnecting separated internal and external building walls
- Lintel repairs
- Securing multi-layer brick rings in bridges, tunnels and arches
- Stabilising solid or rubble filled walls
- For repairing cracks near corners
- Securing delaminated masonry
- Repairing and securing parapets, cornices and decorative fascias
- Tie and grout installed simultaneously
- Suitable for overhead installations.



### DryFix

Dry mechanical pinning and remedial tying system.

- Requires no resin, grout or mechanical expansion
- Highly economical with low installed costs
- Effective in bricks, blocks, concrete, hard mortar and timber
- Rapid, easy installation
- Requires only a small diameter pilot hole – easily made good
- Effective in cavity and solid walls, hollow materials and close to edges
- Usable in all weathers, temperatures and environments.



### BowTie & BowTie HD

Remedial ties for restraining bowed walls. For restraining bowed walls

- Used to stabilise bowed walls by securing them to internal floor joists
- Standard BowTies are recommended when installing into joist ends
- Very effective and economical solution
- Non-disruptive external installation
- Minimal inconvenience to occupants
- Visibly unobtrusive - no external plates
- No splitting of timbers.



### Crack Stitching

Repairing and stabilising cracked brickwork or stonework is best achieved by bonding HeliBars into appropriate bed joints or cut slots with HeliBond grout.



Kotwa DryFix



Kotwa BowTie



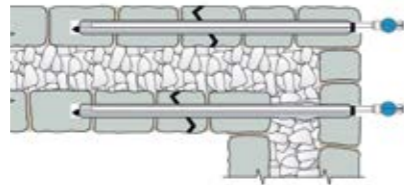


### SockFix

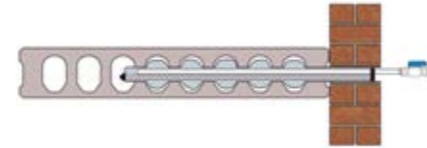
Mechanical grouted sock anchor system for stabilising damaged masonry.



Stitching a cracked solid wall



Stabilising a cracked rubble-filled wall



Securing an external wall to a hollow concrete floor slab

### Applications SockFix

Grout-filled sock combines with threaded bar in a composite action and expands to form a strong chemical/mechanical bond with the substrate:

- » for heavy duty, high load, applications;
- » for securing external walls to hollow concrete floor slabs;
- » for stitching cracked solid and multi-leaf walls;
- » for stabilising rubble-filled walls;
- » for securing unstable parapet walls and arches;
- » where high levels of performance are required in bending;
- » where drilling lengths in excess of 1m are required.

### Features SockFix

- » Engineered project-specific solutions;
- » Cementitious anchor system forms part of the structure;
- » Fast, efficient, proven installation technique;
- » Stabilises masonry and restores structural integrity;
- » Installed in the fabric of the structure providing permanent, non-disruptive, fully concealed repairs;
- » Retains the building's original appearance;
- » More economical and sustainable than demolition and rebuilding;
- » Shut off valve simplifies installation and prevents excessive grout use;
- » Post-tensioning is possible;
- » Full technical support and Approved Installer network.





**BUDOSPRZĘT Sp. z o.o.**

ul. Siemianowicka 105c  
41-902 Bytom  
woj. śląskie

KRS: 0000166845

NIP: PL-6270013470

REGON: 271179405

Tel: 32 388 99 00

Email: poczta@budosprzet.pl

**[www.budosprzet.pl](http://www.budosprzet.pl)**

OPENING HOURS

Monday to Friday:

OFFICE from 7:30 to 15:30

WAREHOUSE from 7:00 to 15:00

SHOP: poczta@budomarket.net

RENTAL: deskowania@budosprzet.pl

